

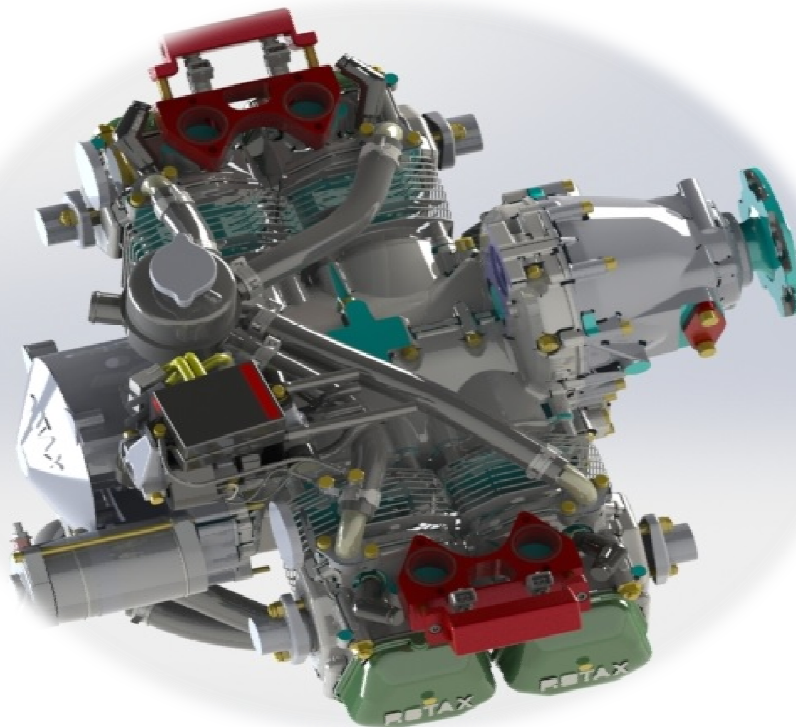
EDGEPERFORMANCE.NO

Rotax Engines, Spareparts, Custom welding & Fabrication

EDGEPERFORMANCE NORWAY

DIRECTPORT FUEL INJECTION (ROTAX 912i / 914i)

- ✓ WAY BETTER FUEL ECONOMY (Customers report 20-30% savings)
- ✓ DIRECTPORT FUEL INJECTION (MULTI-PORT EFI)
- ✓ GREATER MAX TAKE-OFF PERFORMANCE (105HP on 912ULS)
- ✓ GREATER CONTINUES POWER (250-300rpm gain static rpm)
- ✓ CONTINUES TO LEAN ENGINE AFTER MANIFOLD PRESSURE (Bing carbs only leans up to 6500')
- ✓ NO CARB ICING
- ✓ NO CARB SYNCHRONIZING
- ✓ NO CARBURETOR REBUILDS / OVERHAULS
- ✓ AUTOMATIC+MANUAL LEAN/RITCH OR BOTH
- ✓ LESS WEIGHT THAN STOCK 912 (Customers report 2,5-5Kg weight loss)
- ✓ WELL PROVEN TECHNOLOGY (SAME TECHNOLOGY USED IN U.S.A.F - UAV DRONES)



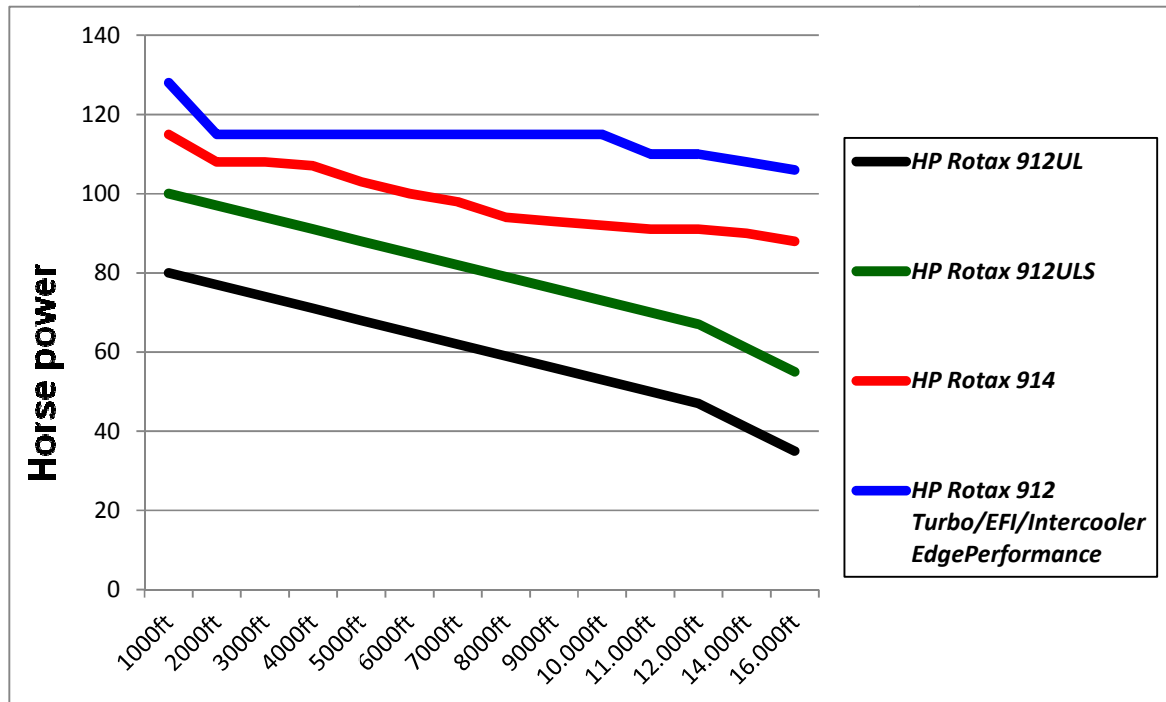
WHAT`S INCLUDED?

- ✓ *SDS-EFI EM-5 ECU (ENGINE CONTROLLER UNIT)*
- ✓ *PRE-WIRED HARNESS*
- ✓ *HALLSENSOR, AIRTEMP, COOLANT SENSOR,MAP SENSOR*
- ✓ *MIXTURE KNOB (MANUAL OVERRIDE +/- 50%)*
- ✓ *3-1/8" PANELMOUNTED LCD CONTROLLER/DISPLAY*
- ✓ *HIGHLY DETAILED INSTALLATION MANUAL*
- ✓ *TRIGGER WHEEL / HALLSENSOR MOUNT*
- ✓ *FUELPRESSURE REGULATOR*
- ✓ *DUAL FUELPUMPS (FIXED IN A PUMP MOUNT)*
- ✓ *DIRECTPORT INJECTION FLANGE ADAPTERS*
- ✓ *FUEL RAILS W/SPACERS*
- ✓ *2-1 TIG WELDED 6061 INTAKEPLENUM W/SILICONE JOINTS/CLAMPS OR DUAL 45MM SHAFTLESS THROTTLEBODIES+ADAPTERS WHICH REPLACES THE BING CARBS (Depends on space on current installation)*
- ✓ *55MM SHAFTLESS 6061-T6 CNC BILLET THROTTLEBODY (PLENUM)*
- ✓ *O-RINGS / FASTENERS / HARDWARE*
- ✓ *O2 WELD-IN LAMBDA BUNG*
- ✓ *WORKS ON ALL 912UL, 912ULS, 912ULSFR AND 914 ENGINES*

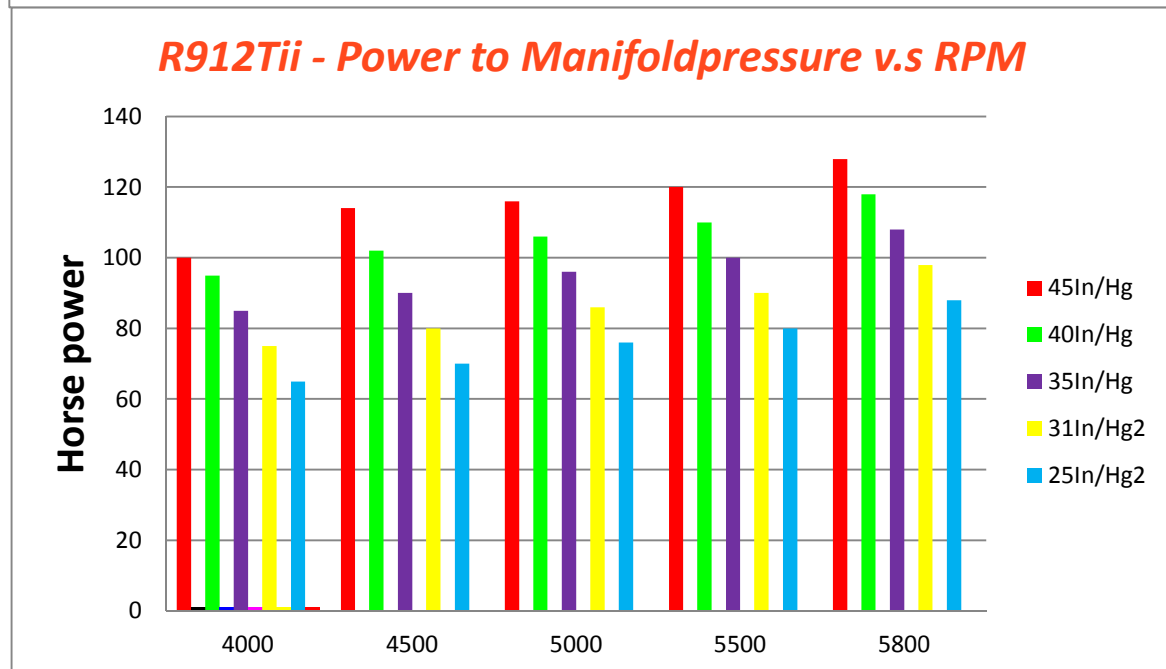


POWER TO ALTITUDE GRAPH

Rotax 912UL – 912ULS – 914 – 912tii



R912Tii - Power to Manifoldpressure v.s RPM



Please contact us for further details, customizing to your installation and pricings.

www.EdgePerformance.no

Post@edgeperformance.no